

EXHIBIT "A"

Preliminary Strata Plan

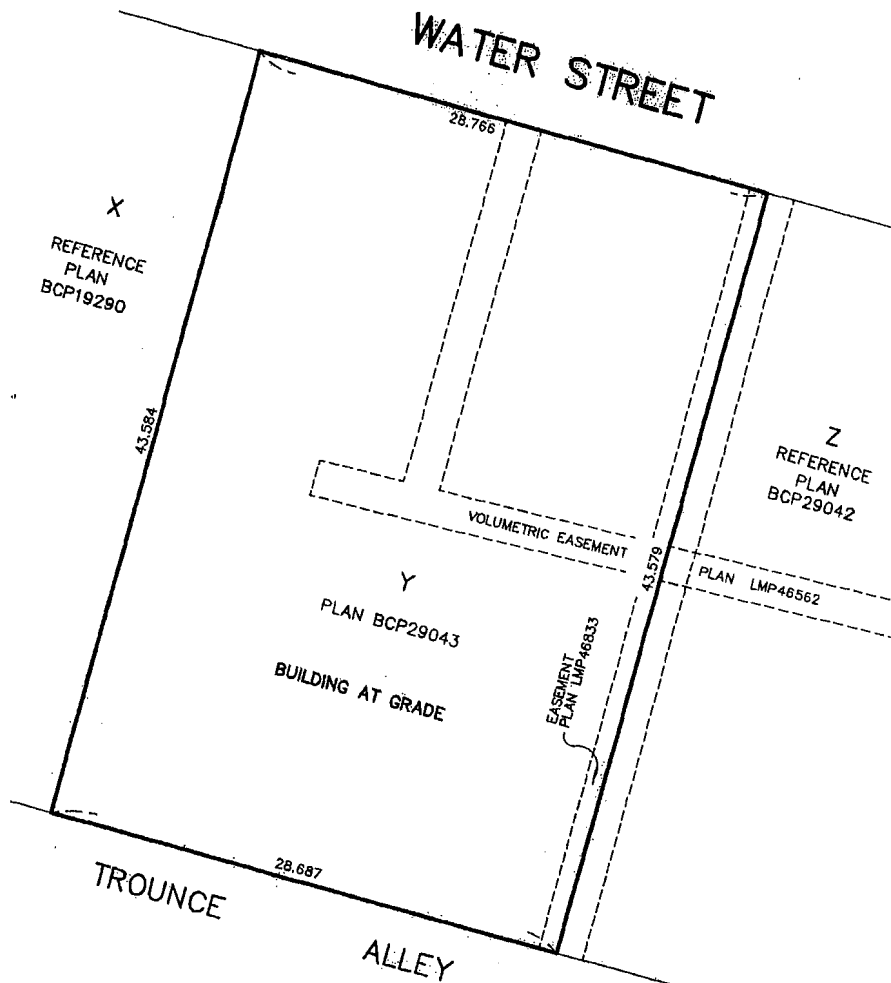
PROPOSED STRATA PLAN OF AIR SPACE PARCEL 1
 BLOCK 2 OLD GRANVILLE TOWNSITE
 NEW WESTMINSTER DISTRICT
 AIR SPACE PLAN BCP _ _ _ _

SHEET 1 OF 10 SHEETS

STRATA PLAN BCS _____

B.C.G.S. 92G.025
 CITY OF VANCOUVER

SCALE 1:250



NAME OF DEVELOPMENT:
 THE GARAGE

CIVIC ADDRESS:
 #12 WATER STREET
 VANCOUVER, B.C.

MATSON PECK & TOPLISS
 SURVEYORS & ENGINEERS
 #210 - 8171 COOK ROAD
 RICHMOND, B.C.
 V6Y 3T8
 PH: 604-270-9331
 FAX: 604-270-4137
 CADFILE: 14127-PRO-STRATA.FLX.

NOTES:

AREA CALCULATIONS ARE BASED ON ARCHITECTURAL PLANS.

FINAL NUMERICAL VALUES IN THE STRATA PLAN WILL BE BASED ON AS CONSTRUCTED DIMENSIONS.

DECKS, TERRACES, BALCONIES AND STORAGE ROOMS ARE LIMITED COMMON PROPERTY FOR THE USE OF THE STRATA LOT INDICATED. (EX. D-12, T-18, B-23, S-29)

STRATA LOT BOUNDARIES ARE MEASURED TO THE OUTSIDE OF EXTERIOR WALLS; CENTRELINE OF WALLS BETWEEN STRATA LOTS AND EDGE OF STUDWALL ADJACENT TO COMMON PROPERTY AREAS.

LEGEND:

ALL DIMENSIONS ARE METRIC.

- C.P INDICATES COMMON PROPERTY
- L.C.P INDICATES LIMITED COMMON PROPERTY
- S.L. INDICATES STRATA LOT
- m² INDICATES SQUARE METRES
- D INDICATES DECK
- B INDICATES BALCONY
- T INDICATES TERRACE
- S INDICATES STORAGE
- ELEC. INDICATES ELECTRICAL
- MECH. INDICATES MECHANICAL

V-07-14127-PRO-STRATA

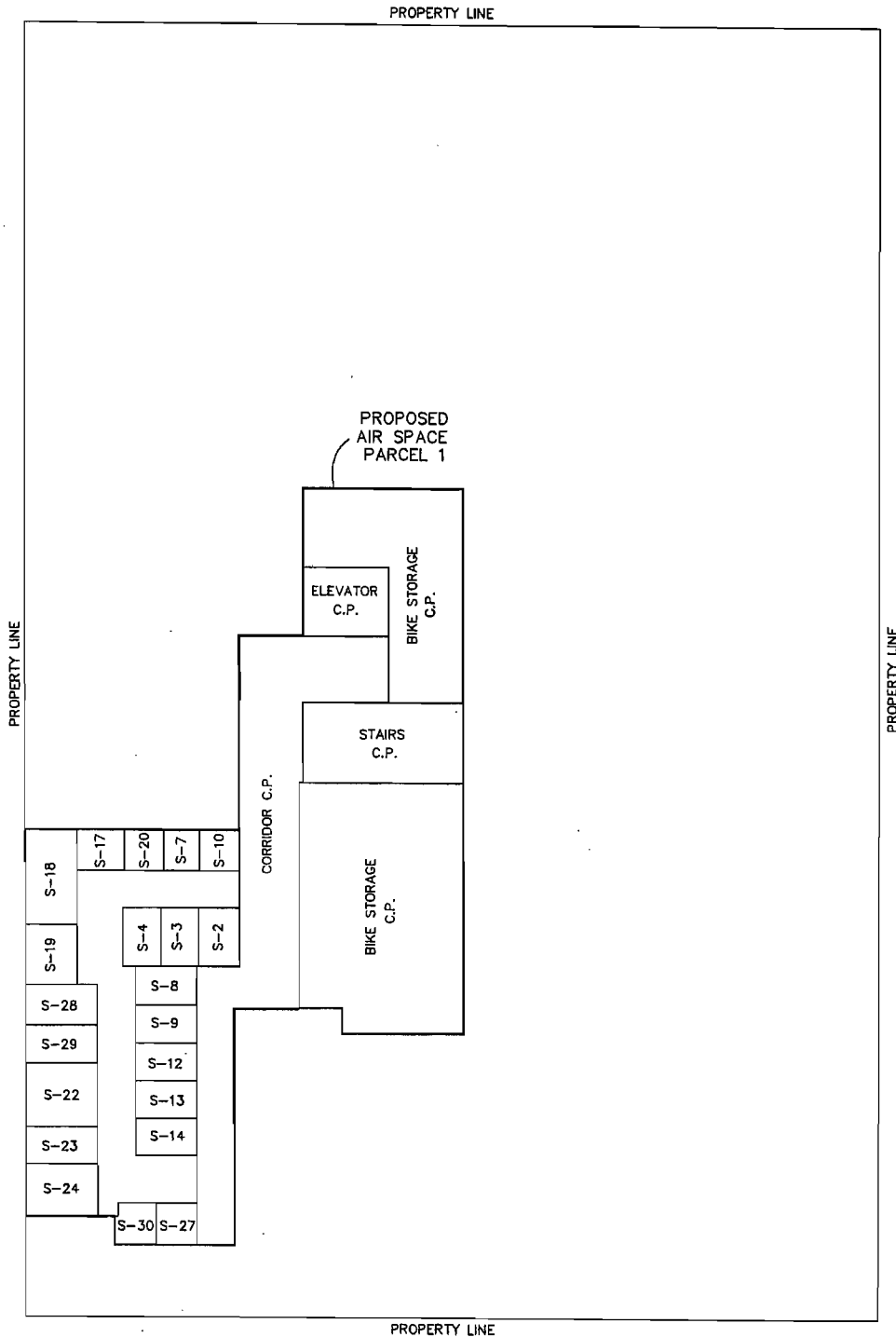
JUNE 18, 2007

BASEMENT LEVEL

SCALE 1:150



STRATA PLAN BCS



MATSON PECK & TOPLISS

SURVEYORS & ENGINEERS

#210 - 8171 COOK ROAD

RICHMOND, B.C.

V6Y 3T8

PH: 604-270-9331

FAX: 604-270-4137

CADFILE: 14127-PRO-STRATA.FLX

V-07-14127-PRO-STRATA

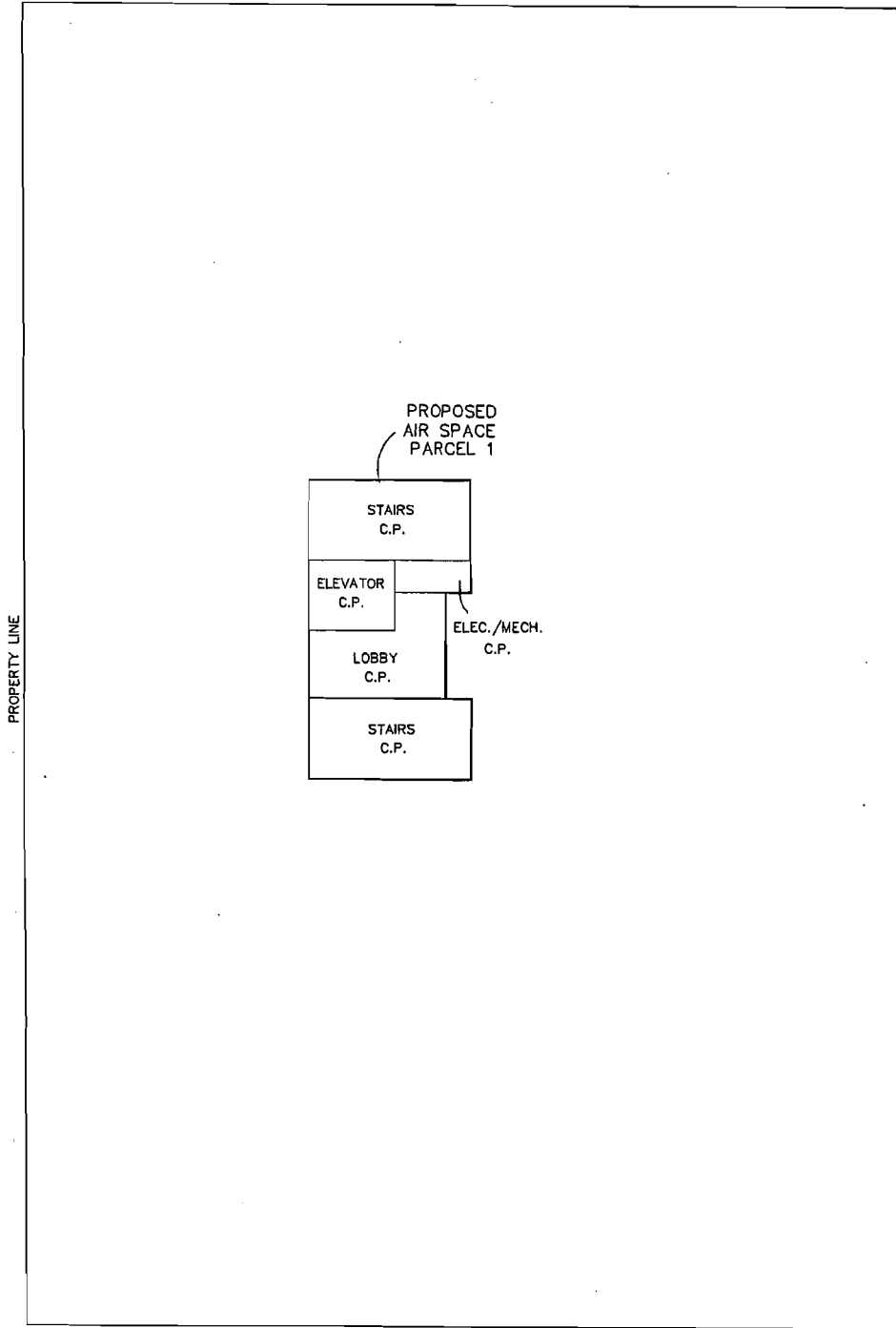
JUNE 18, 2007

SCALE 1:150



STRATA PLAN BCS _____

PROPERTY LINE



PROPERTY LINE

MATSON PECK & TOPLISS

SURVEYORS & ENGINEERS

#210 - 8171 COOK ROAD

RICHMOND, B.C.

V6Y 3T8

PH: 604-270-9331

FAX: 604-270-4137

CADFILE: 14127-PRO-STRATA.FLX

V-07-14127-PRO-STRATA

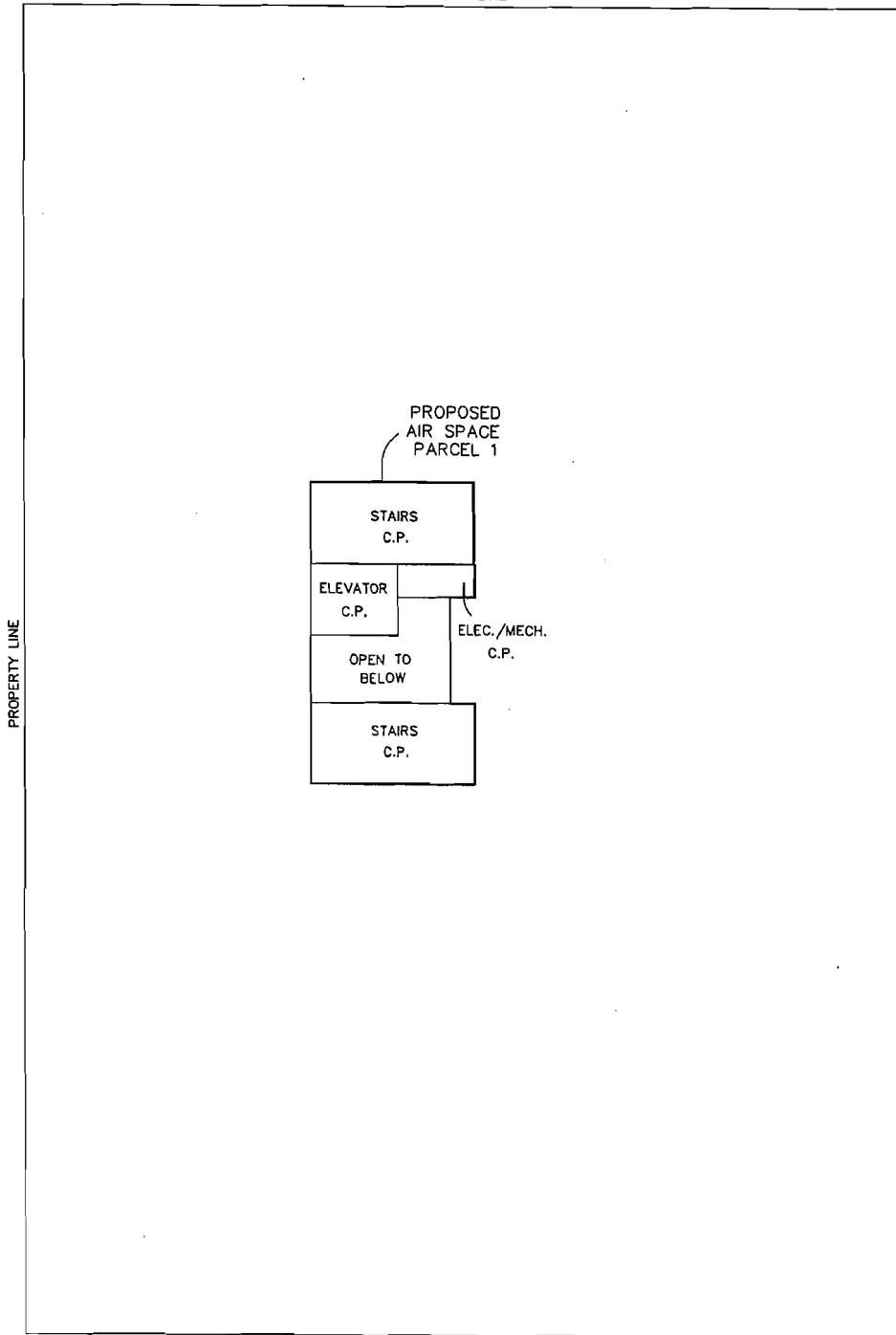
JUNE 18, 2007

SCALE 1:150



STRATA PLAN BCS _____

PROPERTY LINE



PROPERTY LINE

MATSON PECK & TOPLISS

SURVEYORS & ENGINEERS

#210 — 8171 COOK ROAD

RICHMOND, B.C.

V6Y 3T8

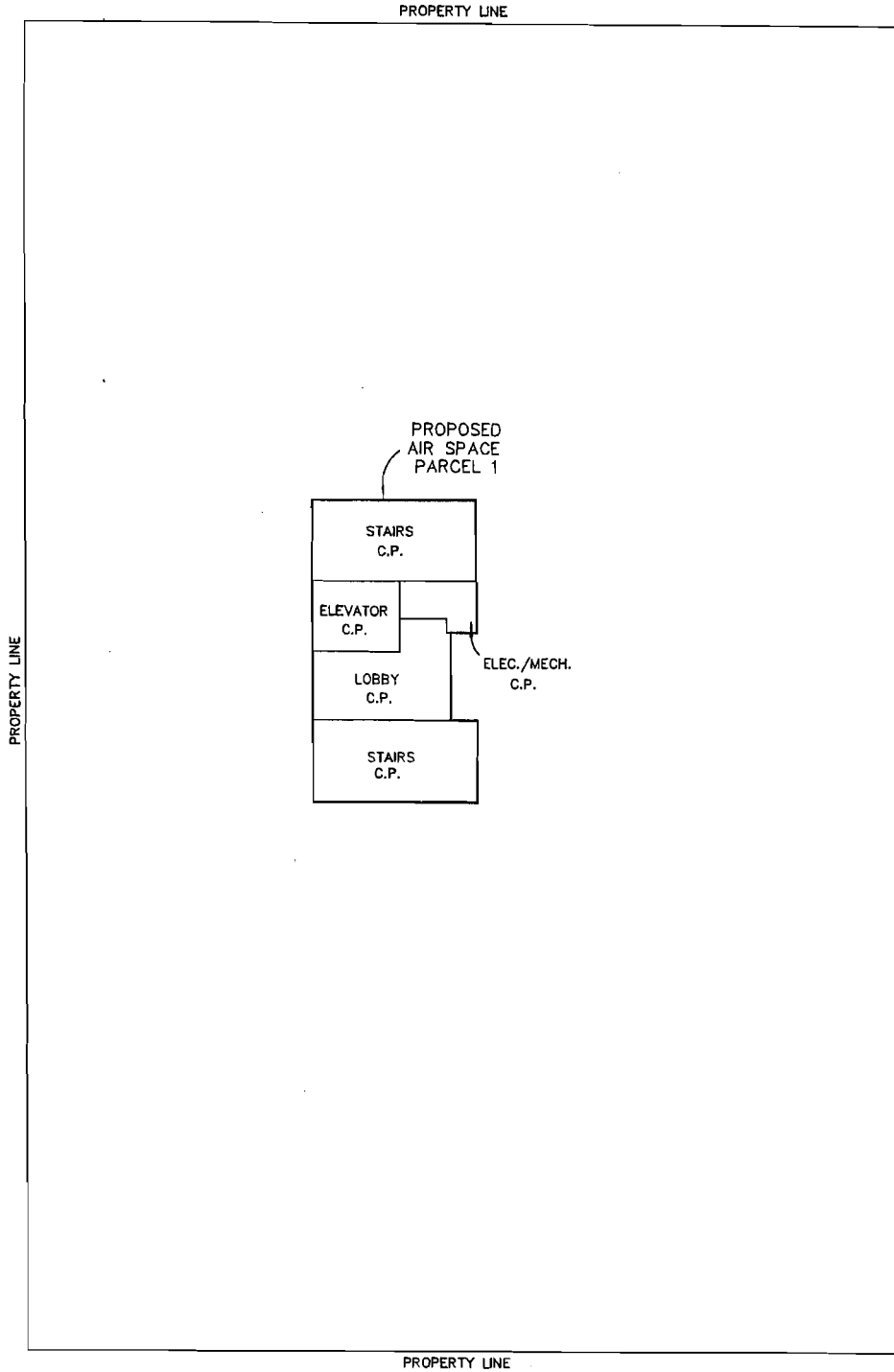
PH: 604-270-9331

FAX: 604-270-4137

CADFILE: 14127-PRO-STRATA.FLX

V-07-14127-PRO-STRATA

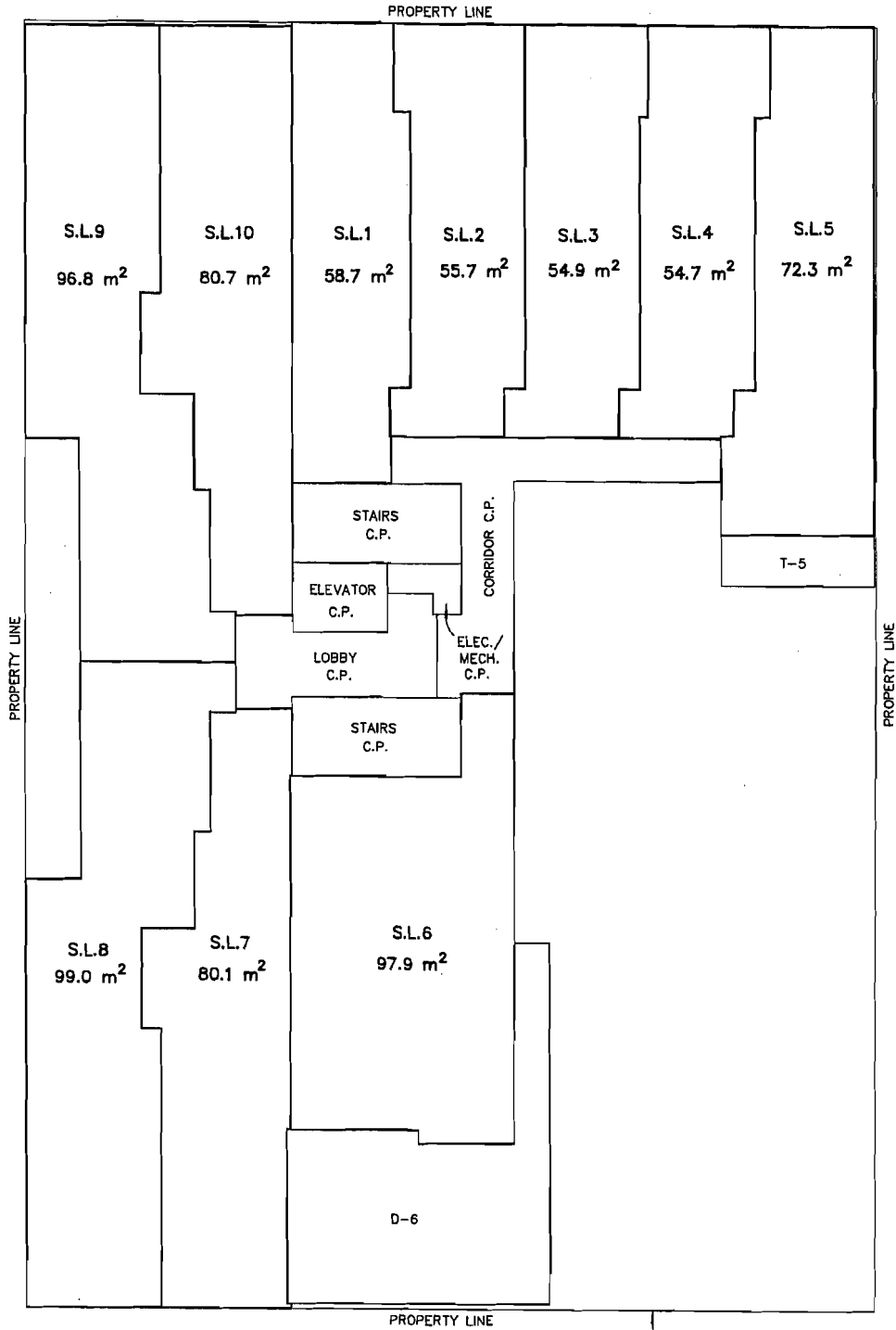
JUNE 18, 2007



MATSON PECK & TOPLISS
SURVEYORS & ENGINEERS
#210 - 8171 COOK ROAD
RICHMOND, B.C.
V6Y 3T8
PH: 604-270-9331
FAX: 604-270-4137
CADFILE: 14127-PRO-STRATA.FLX



STRATA PLAN BCS

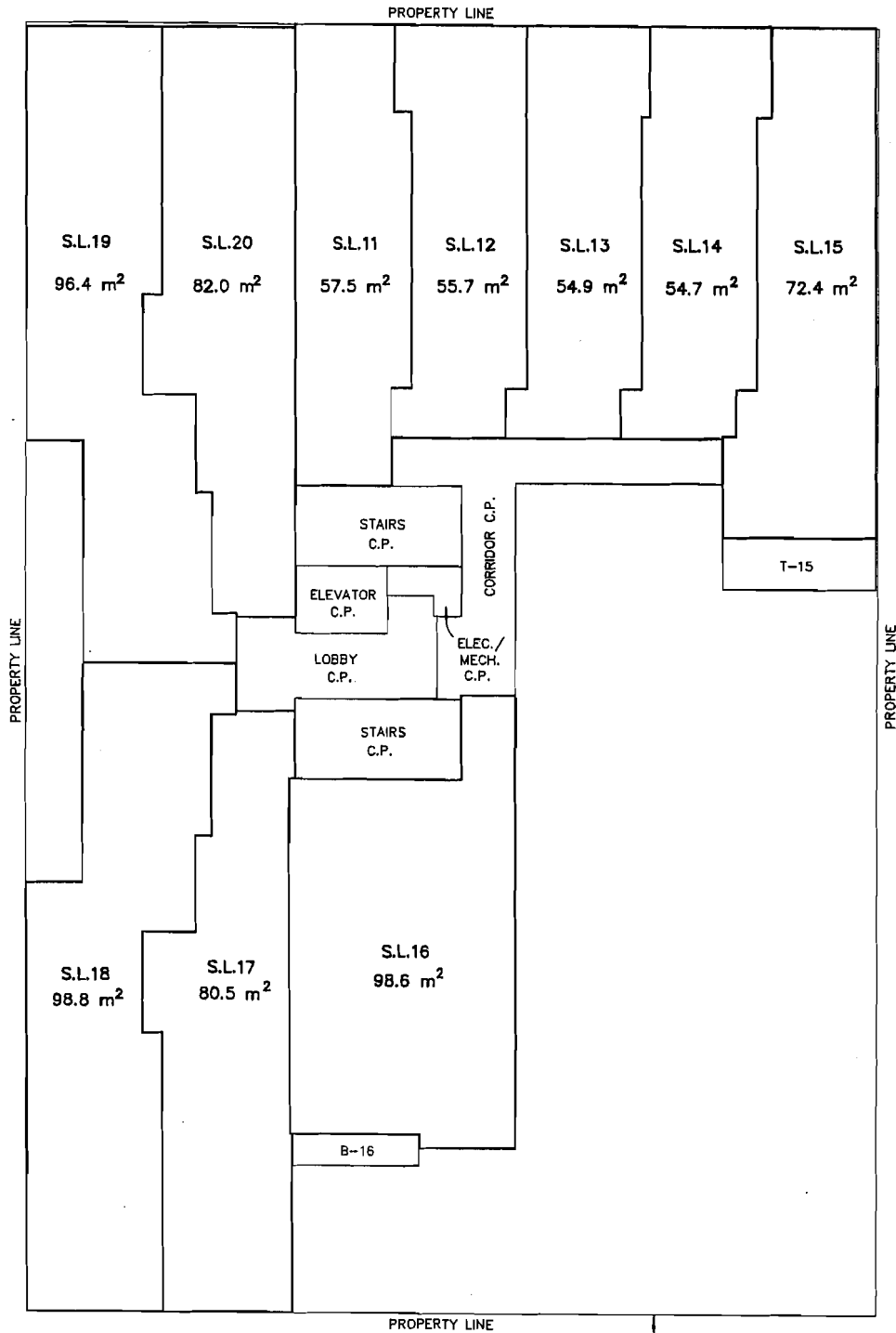


MATSON PECK & TOPLISS
 SURVEYORS & ENGINEERS
 #210 - 8171 COOK ROAD
 RICHMOND, B.C.
 V6Y 3T8
 PH: 604-270-9331
 FAX: 604-270-4137
 CADFILE: 14127-PRO-STRATA.FLX

PROPOSED
 AIR SPACE
 PARCEL 1



STRATA PLAN BCS

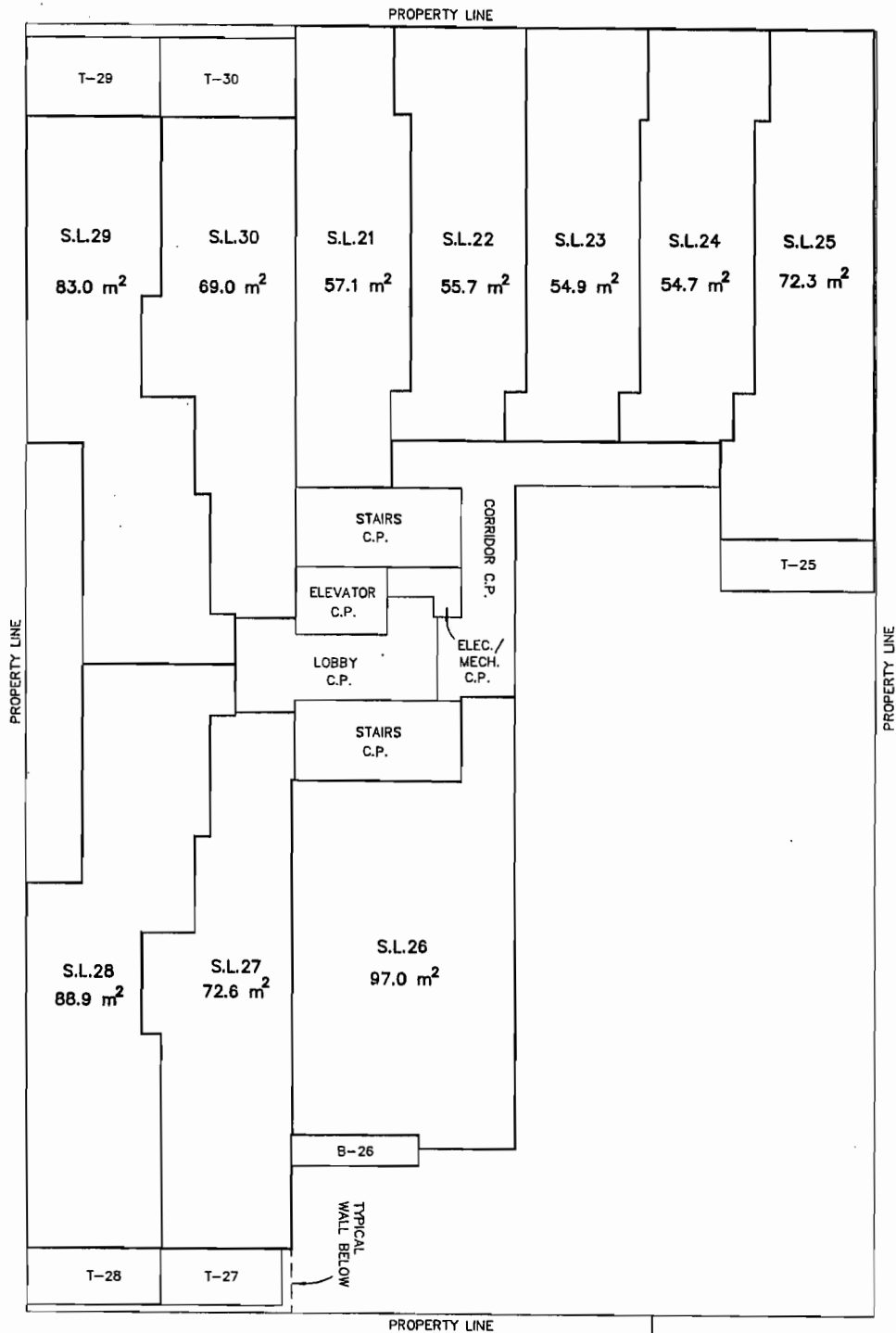


MATSON PECK & TOPLISS
 SURVEYORS & ENGINEERS
 #210 - 8171 COOK ROAD
 RICHMOND, B.C.
 V8Y 3T8
 PH: 604-270-9331
 FAX: 604-270-4137
 CADFILE: 14127-PRO-STRATA.FLX

PROPOSED
 AIR SPACE
 PARCEL 1

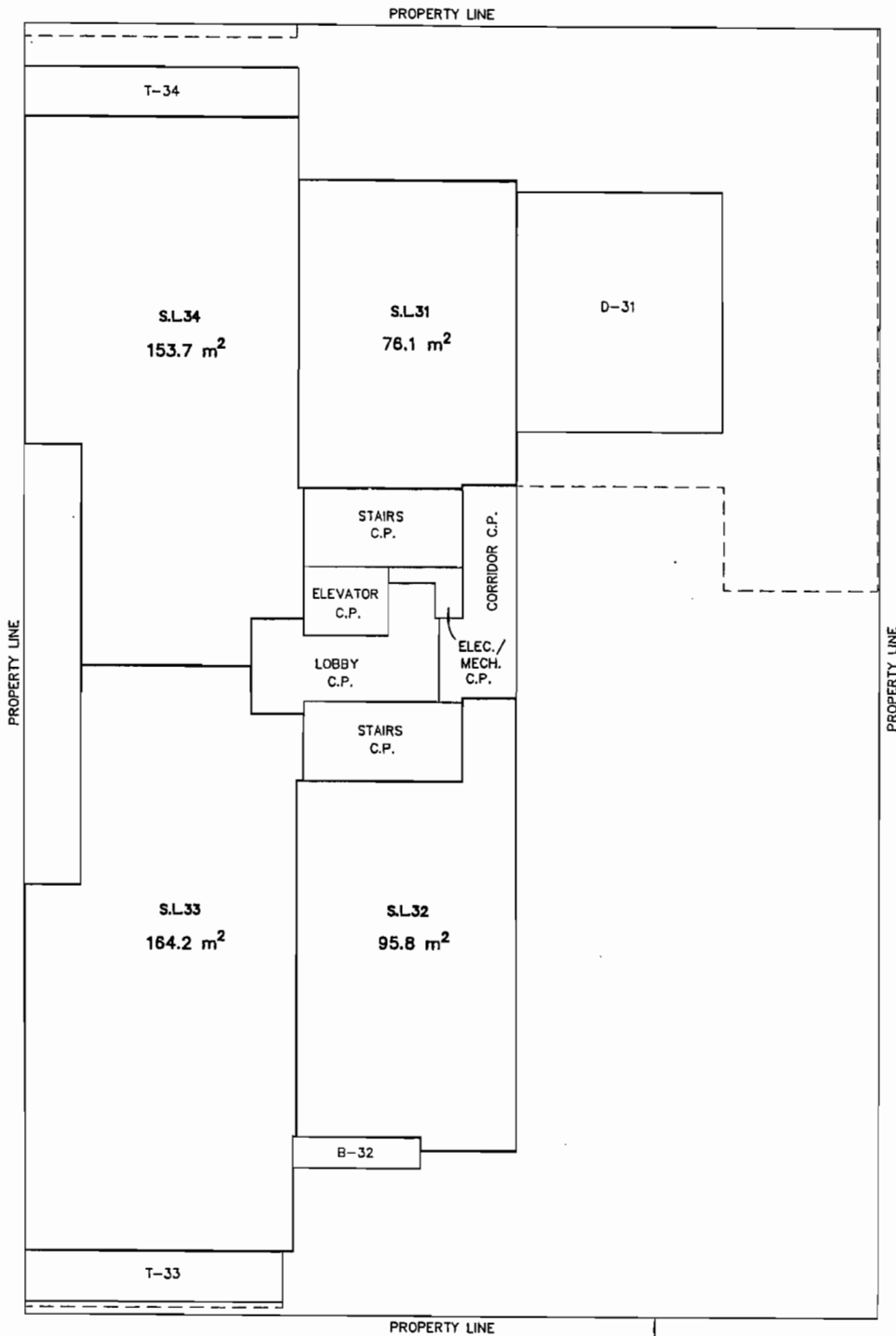


STRATA PLAN BCS



MATSON PECK & TOPLISS
 SURVEYORS & ENGINEERS
 #210 - 8171 COOK ROAD
 RICHMOND, B.C.
 V6Y 3T8
 PH: 604-270-9331
 FAX: 604-270-4137
 CADFILE: 14127-PRO-STRATA.FLX

PROPOSED
 AIR SPACE
 PARCEL 1



MATSON PECK & TOPLISS
SURVEYORS & ENGINEERS
#210 - 8171 COOK ROAD
RICHMOND, B.C.
V6Y 3T8
PH: 604-270-9331
FAX: 604-270-4137
CADFILE: 14127-PRO-STRATA.FLX

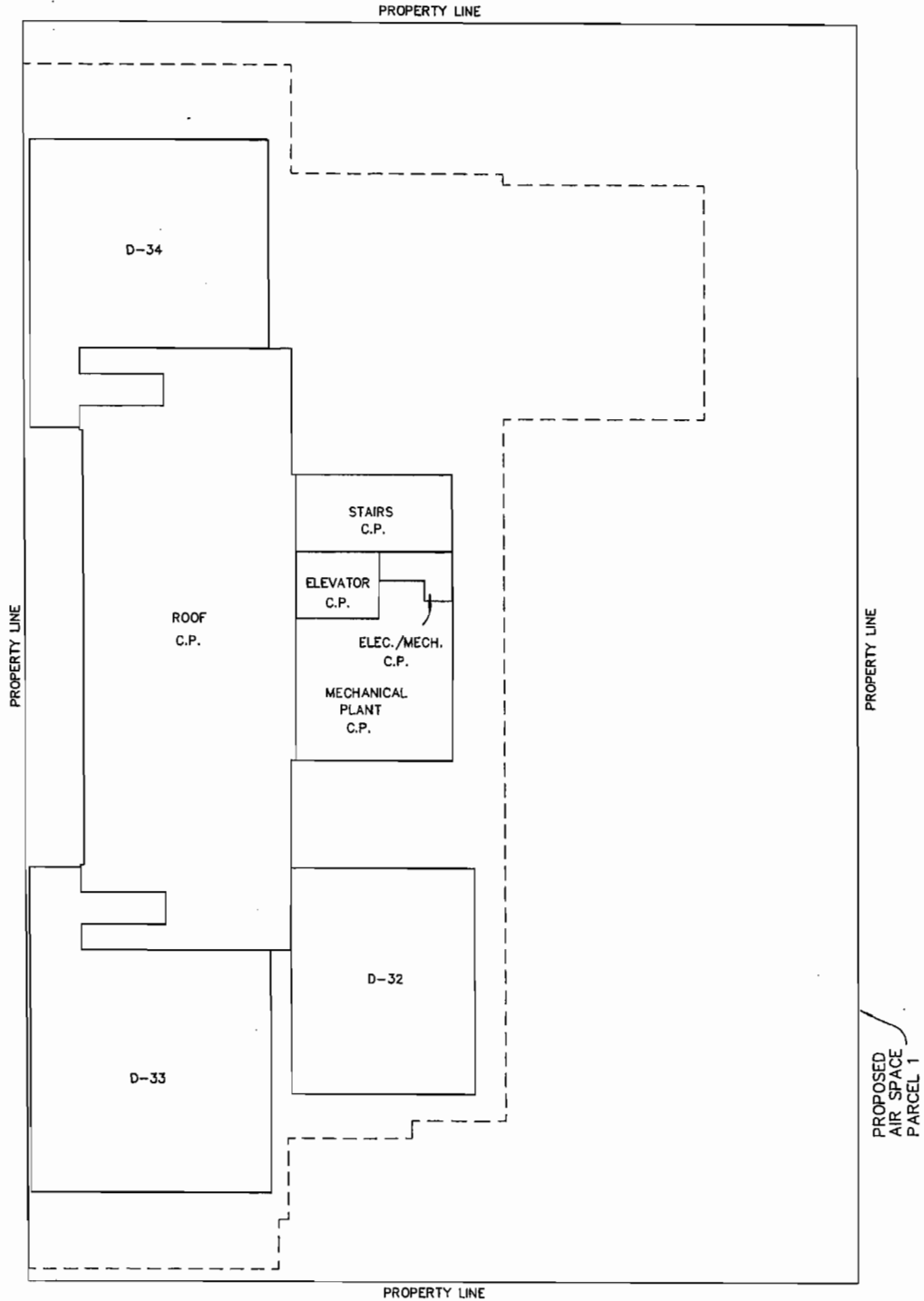
PROPOSED
AIR SPACE
PARCEL 1

ROOF

SCALE 1:150



STRATA PLAN BCS



MATSON PECK & TOPLISS
SURVEYORS & ENGINEERS
#210 - 8171 COOK ROAD
RICHMOND, B.C.
V6Y 3T8
PH: 604-270-9331
FAX: 604-270-4137
CADFILE: 14127-PRO-STRATA.FLX

V-07-14127-PRO-STRATA

JUNE 18, 2007